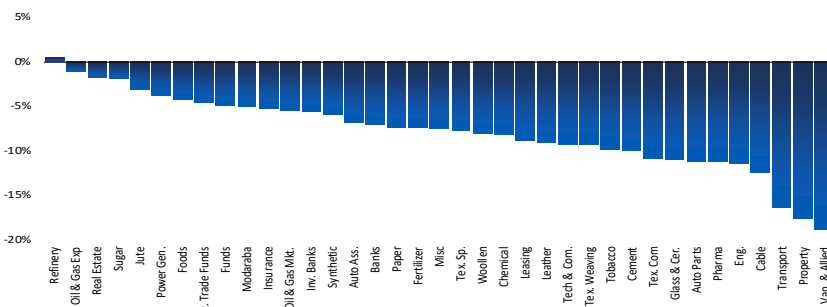


## Weekly Market Review

Market sentiment remained subdued during the week, due to the escalation of military conflict between the U.S./Israel and Iran, alongside tensions on the Pak-Afghan border. Consequently, the index declined by 10,566pts (↓6.3%WoW) during the week, closing at 157,496pts as of Friday. Notably, Monday witnessed the second-largest single-day drop in the index's history, plunging by 16,089pts (↓9.6%DoD). The sharp fall appeared to be an overreaction, followed by a partial recovery in the subsequent sessions. Meanwhile, the Middle East conflict has resulted in the closure of the critical 'Strait of Hormuz', triggering a 16.3%WoW surge in the price of the Oil benchmark Arab Light to US\$83.1/bbl. This development raises concerns over energy security, inflationary pressures, and the external account, weighing on overall market sentiment despite Pakistan's ability to manage the situation. On the macro front, inflation rose to a 16-month high of 7% in Feb'26 amid heightened volatility. Market participation slowed during the week, with avg. daily traded volumes decreasing by 24%WoW to 791mn shares, compared to 1.0bn shares in the prior week. On the external front, trade deficit widened 5%YoY to US\$3.0bn in Feb'26. On the sectoral side, cement offtakes recorded a 13%YoY increase in Feb'26.

Other major news flow during the week included, 1) Govt raises PkR555bn via T-bills sale; yields move up, 2) Pakistan refinery secures crude via Fujairah, Red Sea amid Hormuz closure, 3) SBP governor confident about 3.75-4.75% growth and 5-7% inflation, 4) OGDC strikes major oil, gas discovery in Kohat of 3.8k bpd/11.2mmcf, respectively, and 5) SBP held FX Reserves rose US\$87mn WoW to US\$16.3bn as of Feb 27, 2026. Sector-wise, Refinery remained the sole top performer, up 0.5%WoW. On the other hand, Vanspati & Allied Industries, Property and Transport were amongst the worst performers with a decline of 18.8%/17.6%/16.3%WoW, respectively. Flow wise during the week, major net selling was recorded by Mutual Funds and Foreigners with a net sell of US\$56.0mn and US\$22.1mn, respectively. On the other hand, Banks and Companies absorbed most of the selling with a net buy of US\$34.5mn and US\$15.0mn, respectively. Company-wise, top performers during the week were, 1) ATRL (up 4.8%WoW), 2) MARI (up 2.0%WoW), 3) KEL (up 2.0%WoW), 4) DHPL (up 1.7%WoW), and 5) HUMNL (up 1.1%WoW), while top laggards were, 1) JVDC (down 19.8%WoW), 2) KTML (down 19.5%WoW), 3) AKBL (down 18.1%WoW), 4) SSOM (down 17.2%WoW), and 5) PAEL (down 16.8%WoW).

### Key Sector Performance during the week

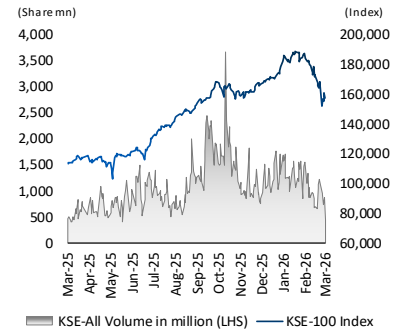


Source: PSX & AKD Research

## Outlook

Going forward, market sentiment is likely to be dictated by developments in the ongoing Middle East conflict. Meanwhile, gov't's ongoing efforts to address energy conservation, the ongoing IMF review, and SBP's commentary in upcoming MPC meeting on Monday would also remain key areas of investor focus. In the medium term, any de-escalation of Middle East military conflict could trigger a significant market recovery, as the recent correction has made market valuations much more appealing, with forward P/E now at 6.9x. [We forecast the KSE-100 Index to reach 263,800 by Dec'26.](#) Our top picks include OGDC, PPL, UBL, MEBL, HBL, FFC, ENGROH, PSO, LUCK, FCCL, INDU, ILP and SYS.

### KSE100 Index Performance



Source: PSX & AKD Research

### Weekly Market Performance

Indices	KSE-100	KSE-30
This week	157,496	48,330
Last week	168,062	51,322
Change	-6.3%	-5.8%

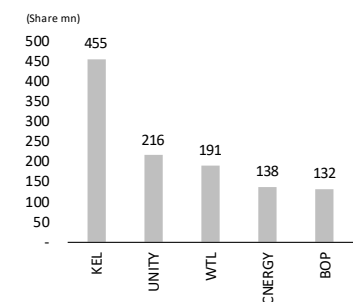
Indices	KMI-30	Allshare
This week	224,687	94,227
Last week	235,325	100,419
Change	-4.5%	-6.2%

Mkt Cap.	PkRbn	US\$bn
This week	17,698	63.34
Last week	18,930	67.71

### Avg. Daily Turnover ('mn shares)

This week	791.14
Last week	1,038.87
Change	-23.8%

### Top 5 Volume Leaders



Source: PSX & AKD Research

## This Week's Reports

### [Pakistan Strategy - KSE100 overreacted to Middle East conflict given manageable impact, \(AKD Daily, Mar 02, 2026\)](#)

KSE100 overreacted to Middle East military conflict, plunging over 10% at the open, adding to its 8.7% decline in Feb'26, and prompting a trading halt within the first seven minutes of the session.

However, we expect the KSE-100 to stage a recovery, as the direct economic impact on Pakistan appears manageable and the country is not a direct party to the conflict.

The evolving Middle East situation could, in fact, strengthen Pakistan's strategic ties with GCC countries, reinforcing its standing as a credible military ally.

We have our liking for OGDC, PPL, UBL, MEBL, HBL, FFC, ENGROH, PSO, LUCK, FCCL, INDU, ILP and SYS.

### [Pakistan Economy - Middle East military conflict advocates for status quo on policy rate, \(AKD Daily Mar 06, 2026\)](#)

We expect SBP to maintain the status quo in its upcoming Monetary Policy Committee (MPC) meeting due to the recent military conflict in Middle East and the surge in oil prices.

The impact of higher oil prices on external account would be offset by RLNG supply halt due to closure of Strait of Hormuz and reduced demand of petroleum products given higher prices and remote working initiatives, in our view.

We foresee real interest rates to avg 4.3% over the next 12-M, assuming two rate cuts of 50bps each in 2HCY26, as we have factored in the current Arab Light price for the next two months before reverting to our long-term assumption.

Meanwhile, we foresee electricity prices to provide some relief as low-cost coal replaces expensive RLNG in the energy mix.

### [Pakistan Cement - Middle East military conflict risk remains limited, \(AKD Daily Mar 03, 2026\)](#)

Cement offtakes increased by 13%YoY to 4.2mn tons in Feb'26, led by 38%YoY rise in export dispatches.

Cement prices in the North have recovered on improving demand, which is expected to support gross margins going forward.

We expect limited impact from Middle East conflict, as coal price upside is likely to remain contained amid rising local supplies in key coal importing countries, along with companies' cost pass-on ability.

Our top picks are LUCK (Dec'26 TP: Pkr731/sh), FCCL (Dec'26 TP: Pkr88/sh), and DGKC (Dec'26 TP: Pkr389/sh).

### [OGDC - Baragzai discovery to triple Nashpa output for OGDC and PPL, \(AKD Off the Analyst's Desk Mar 04, 2026\)](#)

Oil & Gas Development Company Ltd. (OGDC) has announced a consecutive fifth discovery at the previously reported Baragzai X-01 well in the Nashpa Block, KPK. The newly tested Lockhart Limestone formations flowed at 3.8k bpd of oil and 11.2 mmcf of gas through a 32/62" choke. Based on wireline log evaluation, four cased-hole drill stem tests were earlier conducted in the Kingriali, Datta, Samana Suk + Shinwari and Hangu + Lumshiwal formations. These discoveries take cumulative production from the three formations to 13.5kbpd of oil and 36mmcf of gas.

The incremental earnings impact from the Lock formation alone is estimated at Pkr1.5/sh for OGDC (WI: 57.2%) and Pkr1.2/sh for PPL (WI: 27.8%). On a combined basis, the cumulative impact from these formations rises to Pkr5.3/sh for OGDC and Pkr4.1/sh for PPL. Given successful Drill Stem Testing (DST) at these five formations at Baragzai-X1, we expect commingled production to be brought online post installation of requisite wellhead and surface facilities.

### [ENGROH - CY25 Analyst Briefing takeaways, \(AKD Off the Analyst's Desk Mar 2, 2026\)](#)

Engro Holdings Ltd. (ENGROH) held its analyst briefing to discuss their CY25 performance and future outlook. Here are the key highlights from the call:

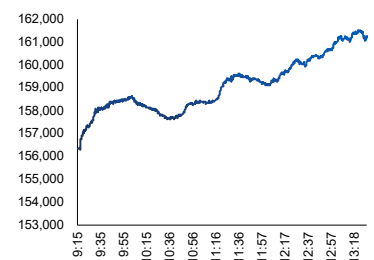
Company reported consolidated earnings of Pkr55.6bn (EPS: Pkr46.2) in CY25, up 2.5x YoY from Pkr21.8bn (EPS: Pkr18.1) in SPLY, largely due to accounting impact of Pkr26.6bn (Pkr22.1/sh) stemming from reclassification of the energy portfolio to continued operations. However, recurring earnings were Pkr29.1bn (EPS: Pkr24.1).

## KSE100 Index Daily Performance

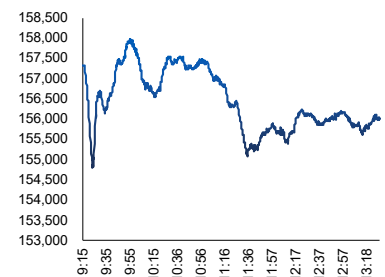
Mar 06, 2026



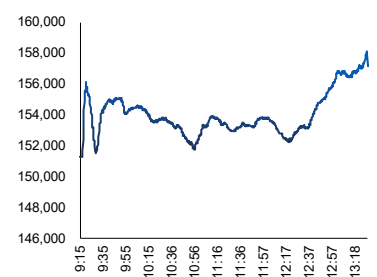
Mar 05, 2026



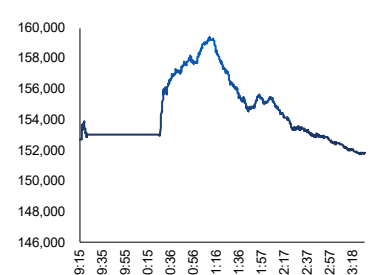
Mar 04, 2026



Mar 03, 2026



Mar 02, 2026



Source: PSX & AKD Research

### Major World Indices' Performance

Country	Bloomberg Code	6-Mar-26	27-Feb-26	WoW	CYTD
Pakistan	KSE100 Index	157,789	168,375	-6.29%	-9.3%
Srilanka	CSEALL Index	22,717	23,734	-4.28%	0.4%
Thailand	SET Index	1,412	1,528	-7.60%	12.1%
Indonesia	JCI Index	7,586	8,235	-7.89%	-12.3%
Malaysia	FBMKLCI Index	1,718	1,717	0.08%	2.3%
Philippines	PCOMP Index	6,320	6,611	-4.40%	4.4%
Vietnam	VNINDEX Index	1,768	1,880	-5.98%	-0.9%
Hong Kong	HSI Index	25,757	26,631	-3.28%	0.5%
Singapore	FSSTI Index	4,853	4,995	-2.85%	4.4%
Brazil	IBX Index	76,256	79,785	-4.42%	12.1%
India	SENSEX Index	79,291	81,287	-2.46%	-7.0%
S&P	SPX Index	6,831	6,879	-0.70%	-0.2%
DJIA	INDU Index	47,955	48,978	-2.09%	-0.2%
UK	UKX Index	10,441	10,911	-4.30%	5.1%
Germany	DAX Index	23,891	25,284	-5.51%	-2.4%
Qatar	DSM Index	10,699	11,055	-3.22%	-0.6%
Abu Dhabi	ADSMI Index	9,906	10,454	-5.24%	-0.9%
Dubai	DFMGI Index	5,951	6,504	-8.49%	-1.6%
Kuwait	KWSEIDX Index	6,633	6,633	0.00%	0.0%
Oman	MSM30 Index	7,378	7,393	-0.20%	25.8%
Saudi Arabia	SASEIDX Index	10,776	10,709	0.63%	2.7%
MSCI EM	MXEF Index	1,504	1,611	-6.65%	7.1%
MSCI FM	MXFM Index	771	802	-3.86%	2.2%

### Commodities Markets

SPOT	Units	6-Mar-26	27-Feb-26	WoW	CYTD
TRJ-CRB	Points	336.85	312.67	7.73%	12.74%
Nymex (WTI)	US\$/bbl.	81.86	67.02	22.14%	42.56%
ICE Brent	US\$/bbl.	87.92	70.83	24.12%	40.79%
N. Gas Henry Hub	US\$/Mmbtu	2.90	2.98	-2.68%	-27.32%
Cotton	USd/Pound	74.75	75.65	-1.19%	0.61%
Gold	US\$/Tr.Oz	5,095.45	5,278.93	-3.48%	17.97%
Silver	US\$/Tr.Oz	83.59	93.79	-10.87%	16.65%
Copper	US\$/MT	12,857.44	13,294.03	-3.28%	3.24%
Platinum	US\$/Oz	2,151.75	2,369.00	-9.17%	4.43%
Coal	US\$/MT	111.25	98.90	12.49%	29.06%

### Weekly commodities performance

ICE Brent (US\$/bbl) 87.92 <b>24.12%</b>	Coal (US\$/MT) 111.25 <b>12.49%</b>
<b>-1.19%</b> Cotton (USD/Pound) 74.75	<b>-3.48%</b> Gold (US\$/Tr.Oz) 5,095.45

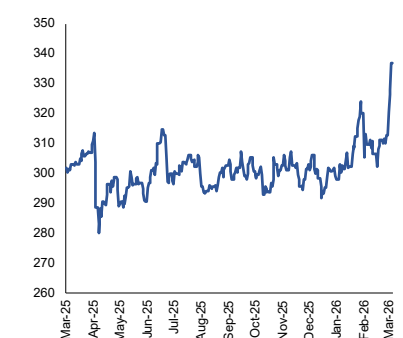
Source: Bloomberg & AKD Research

### International Major Currencies

SPOT	6-Mar-26	27-Feb-26	Chg +/-	WoW	CYTD
Dollar Index	99.144	97.608	1.536	1.57%	0.84%
USD/PkR	279.40	279.573	-0.171	-0.06%	-0.26%
USD/JPY	157.840	156.050	1.790	1.15%	0.72%
EUR/USD	1.159	1.181	-0.023	-1.92%	-1.37%
GBP/USD	1.334	1.348	-0.014	-1.05%	-0.99%
AUD/USD	0.702	0.712	-0.010	-1.38%	5.20%
NZD/USD	0.589	0.600	-0.011	-1.88%	2.21%
CHF/USD	0.781	0.769	0.012	1.53%	-1.45%
CAD/USD	1.367	1.364	0.002	0.18%	-0.43%
USD/KRW	1,481	1,440	40.450	2.81%	2.84%
CNY/USD	6.906	6.862	0.043	0.63%	-1.18%

Source: PSX, Bloomberg & AKD Research

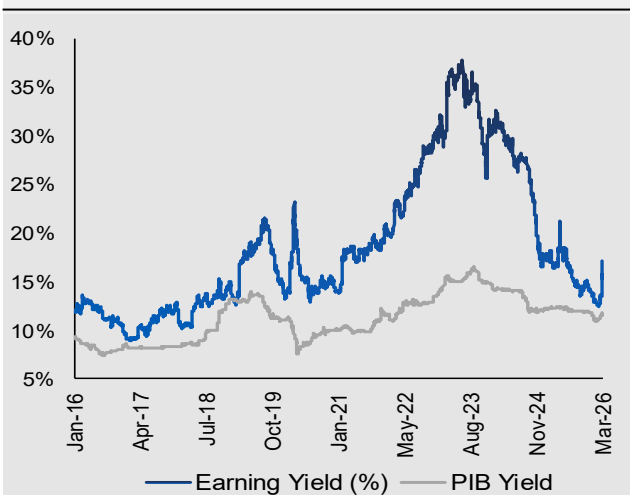
### TRJ-CRB Index



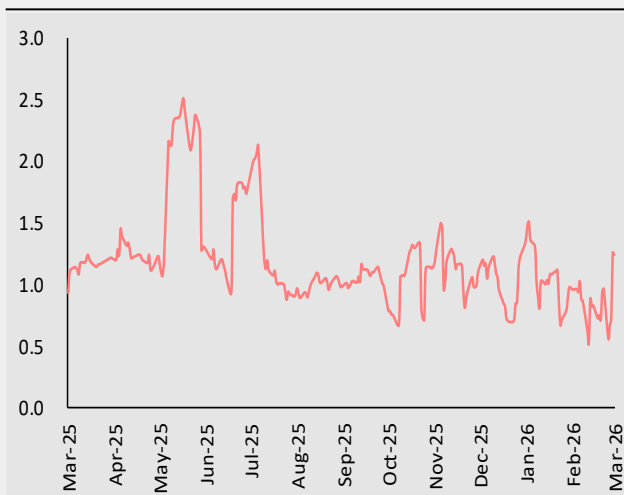
Source: PSX & AKD Research

## Chart Banks

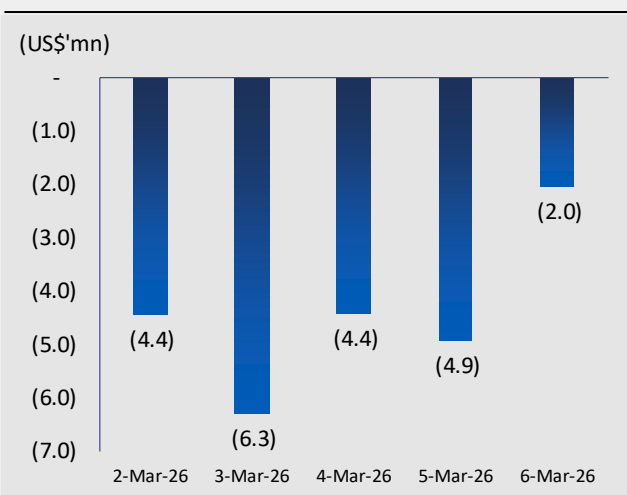
Average PIB and E/Y differential (%)



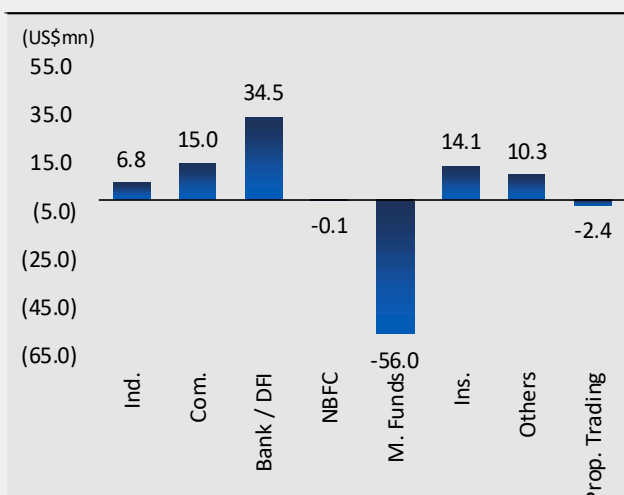
Advance to Decline Ratio



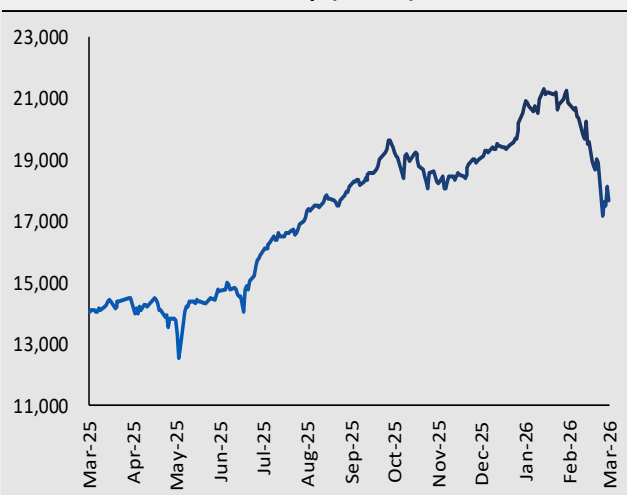
FIPI Flows for the week



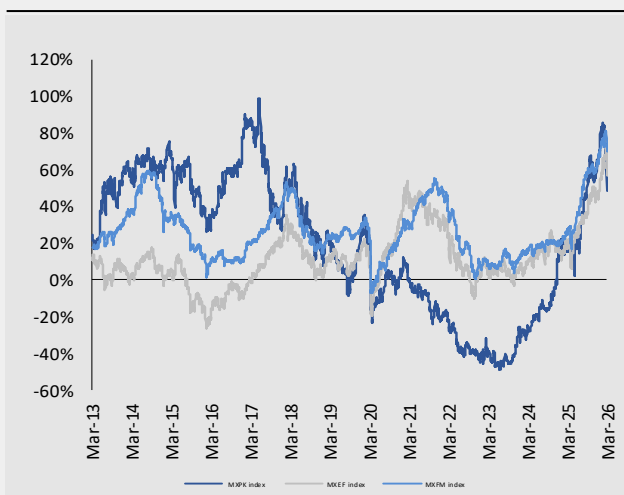
LIPI Flows for the week



KSE-All Share Index Mkt Cap (PkRbn)



MXPK vs. MXFM & MXEM performance



Source: Bloomberg, NCCPL, PSX & AKD Research

## AKD Universe Active Coverage Cluster's Valuations

	Symbol	Price	TP	Stance*	EPS			PE			PB			DY		
		(Pkr)	(Pkr)		FY25E	FY26E	FY27E	FY25E	FY26E	FY27E	FY25E	FY26E	FY27E	FY25E	FY26E	FY27E
<b>Oil &amp; Gas Marketing</b>																
Pakistan State Oil	PSO	384	900	BUY	44.5	65.0	80.4	8.6	5.9	4.8	0.7	0.6	0.6	2.6%	3.9%	5.2%
Attock Petroleum	APL	533	760	BUY	83.5	84.8	87.6	6.4	6.3	6.1	1.1	0.9	0.9	4.8%	6.6%	7.0%
<b>Steel</b>																
Mughal Iron & Steel	MUGHAL	72	142	BUY	2.6	10.2	14.2	27.5	7.0	5.1	0.9	0.8	0.7	0.0%	2.8%	3.5%
International Steels Limit	ISL	76	151	BUY	3.6	7.6	12.1	21.1	10.0	6.3	1.3	1.2	1.1	3.3%	5.9%	9.2%
<b>Cement</b>																
Lucky Cement Limited	LUCK	383	731	BUY	52.5	66.6	71.9	7.3	5.7	5.3	1.6	1.3	1.1	1.0%	1.8%	2.3%
Maple Leaf Cement	MLCF	84	157	BUY	11.0	10.0	12.2	7.7	8.4	6.9	1.2	1.1	1.0	0.0%	1.5%	3.0%
Cherat Cement Company	CHCC	259	640	BUY	44.7	42.2	51.6	5.8	6.1	5.0	1.5	1.3	1.0	2.1%	2.7%	3.5%
Pioneer Cement Ltd	PIOC	240	372	BUY	21.5	23.5	30.3	11.2	10.2	7.9	1.2	1.1	1.0	4.2%	6.5%	8.3%
Kohat Cement Company	KOHC	84	194	BUY	12.6	11.7	14.3	6.6	7.1	5.9	1.6	1.3	1.1	0.0%	0.0%	3.6%
Fauji Cement Company	FCCL	44	88	BUY	5.4	6.0	7.7	8.1	7.3	5.7	1.3	1.2	1.0	2.9%	4.6%	5.7%
D.G. Khan Cement	DGKC	183	389	BUY	19.8	23.6	29.2	9.3	7.8	6.3	0.8	0.7	0.7	1.1%	2.5%	4.6%
<b>Power</b>																
Hub Power Company	HUBC	207	196	NEU	39.8	40.2	44.1	5.2	5.2	4.7	1.1	1.0	0.9	7.2%	7.2%	7.2%
Nishat Power Limited	NPL	69	87	BUY	-2.1	4.0	3.7	-32.5	17.1	18.7	0.9	0.8	0.8	8.8%	3.6%	2.9%
<b>Automobile Assembler</b>																
Honda Atlas Cars	HCAR	169	444	BUY	19.0	25.8	27.7	8.9	6.6	6.1	1.0	0.9	0.8	4.7%	5.9%	6.5%
Indus Motor Ltd	INDU	1,880	3,966	BUY	292.7	333.6	340.8	6.4	5.6	5.5	1.9	1.6	1.4	9.4%	10.6%	10.9%
<b>Oil &amp; Gas Exploration</b>																
Oil & Gas Development	OGDC	276	522	BUY	39.5	39.5	51.0	7.0	7.0	5.4	0.9	0.8	0.7	5.5%	6.2%	7.4%
Pakistan Petroleum Ltd	PPL	215	412	BUY	33.1	34.2	40.5	6.5	6.3	5.3	0.8	0.8	0.7	3.5%	4.9%	8.1%
Mari Petroleum Company	MARI	617	935	BUY	54.3	57.4	87.4	11.4	10.7	7.1	2.7	2.4	2.0	3.5%	3.7%	5.7%
Pakistan Oilfields Ltd	POL	637	850	BUY	85.1	89.4	106.3	7.5	7.1	6.0	2.3	2.2	2.2	11.8%	12.6%	14.1%
<b>Chemical</b>																
Engro Polymer & Chemicals	EPCL	32	28	SELL	-4.5	0.5	1.2	-7.2	64.5	27.6	1.3	1.2	1.2	0.0%	0.0%	0.0%
<b>Textile</b>																
Nishat Mills Limited	NML	149	318	BUY	17.1	15.9	28.0	8.7	9.4	5.3	0.4	0.3	0.3	1.3%	1.3%	2.3%
Nishat Chunian Limited	NCL	37	84	BUY	3.3	7.2	14.6	11.2	5.1	2.5	0.4	0.4	0.3	5.4%	5.4%	10.8%
Interloop Limited	ILP	76	122	BUY	3.8	8.0	13.3	19.8	9.5	5.7	1.9	1.7	1.4	1.3%	3.9%	5.9%
<b>Banks</b>																
Habib Bank Ltd	HBL	279	483	BUY	45.5	51.2	54.6	6.1	5.4	5.1	0.9	0.8	0.8	7.2%	7.5%	10.1%
MCB Bank Ltd	MCB	370	544	BUY	49.3	50.8	53.3	7.5	7.3	6.9	1.3	1.4	1.4	9.7%	9.7%	10.8%
United Bank Ltd	UBL	401	590	BUY	51.9	50.5	45.3	7.7	7.9	8.9	2.0	2.2	2.2	7.3%	8.0%	8.0%
Meezan Bank Ltd	MEBL	445	672	BUY	49.5	50.8	53.8	9.0	8.8	8.3	2.9	2.5	2.2	6.3%	6.3%	6.7%
Bank AL Habib Ltd	BAHL	156	266	BUY	27.6	29.3	33.6	5.7	5.3	4.6	1.0	1.0	0.9	9.6%	10.3%	11.5%
Bank Al Falah Ltd	BAFL	117	171	BUY	18.0	16.2	16.7	6.5	7.2	7.0	1.0	0.9	0.9	9.0%	8.5%	9.0%
Faysal Bank Limited	FABL	84	134	BUY	14.3	14.0	14.4	5.9	6.0	5.9	1.1	1.0	0.9	7.7%	8.3%	8.9%
Askari Bank Limited	AKBL	83	116	BUY	15.8	14.4	13.2	5.3	5.8	6.3	0.8	0.7	0.7	6.0%	6.6%	7.2%
Allied Bank Limited	ABL	170	334	BUY	30.7	30.8	33.0	5.5	5.5	5.2	0.8	0.7	0.7	9.4%	9.4%	11.7%
<b>Inv. Banks / Inv. Cos</b>																
Engro Holdings Ltd	ENGROH	255	351	BUY	46.2	50.7	55.0	5.5	5.0	4.6	1.5	1.2	1.0	0.0%	3.9%	7.8%
<b>Fertilizer</b>																
Fauji Fertilizer Company	FFC	522	801	BUY	51.7	66.7	68.1	10.1	7.8	7.7	5.5	4.6	4.0	7.1%	9.6%	9.6%
Engro Fertilizers Ltd	EFERT	212	264	BUY	16.9	21.7	22.1	12.5	9.8	9.6	6.3	6.2	6.0	7.1%	9.9%	9.9%
Fatima Fertilizer Company	FATIMA	141	175	BUY	21.8	23.7	21.8	6.5	5.9	6.5	1.7	1.4	1.3	6.0%	6.7%	6.0%
<b>Technology</b>																
Systems Limited	SYS	118	277	BUY	7.5	11.2	14.8	15.7	10.5	7.9	3.7	2.9	2.2	1.5%	2.1%	2.7%

## AKD Universe Coverage Cluster's Performance

Stocks	Symbol	Price		Absolute Performance (%)				1 Year	1 Year
		6-Mar-26	1M	3M	6M	12M	CYTD	High	Low
<b>KSE-100 Index</b>		<b>157,496.1</b>	<b>-14.5%</b>	<b>-5.7%</b>	<b>2.1%</b>	<b>38.5%</b>	<b>-9.5%</b>	<b>189,167</b>	<b>103,527</b>
<b>Automobile and Parts</b>									
Honda Atlas Cars	HCAR	169.3	(29.8)	(39.4)	(43.3)	(38.9)	(38.3)	311.2	160.6
Indus Motors	INDU	1,880.4	(9.5)	(3.2)	(11.9)	(0.1)	(3.9)	2,209.8	1,606.1
<b>Cements</b>									
DG Khan Cement	DGKC	183.3	(18.2)	(21.7)	(22.1)	51.1	(20.3)	269.2	117.8
Lucky Cement	LUCK	383.0	(18.3)	(19.5)	(17.1)	34.6	(19.4)	512.7	283.8
Maple Leaf Cement Factory	MLCF	84.3	(25.0)	(19.8)	(22.9)	54.6	(28.2)	130.4	55.0
Fauji Cement Company Ltd.	FCCL	43.8	(21.8)	(19.8)	(25.9)	6.5	(21.6)	61.1	39.0
Pioneer Cement Limited	PIOC	240.1	(31.9)	(37.9)	(6.2)	22.9	(38.0)	421.4	171.6
Cherat Cement Limited	CHCC	259.0	(18.6)	(22.6)	(28.9)	(0.2)	(21.9)	366.6	238.4
<b>Engineering</b>									
Amreli Steel Ltd	ASTL	15.4	(30.2)	(31.5)	(33.2)	(24.3)	(34.2)	28.7	15.4
Mughal Iron & Steel	MUGHAL	71.9	(21.7)	(14.4)	(6.5)	4.0	(30.2)	110.5	55.0
<b>Fertilizers</b>									
Engro Polymer & Chemicals	EPCL	32.4	5.0	2.4	6.2	(12.4)	(0.5)	39.6	26.6
Engro Fertilizers Ltd.	EFERT	211.6	(10.0)	(3.0)	2.9	3.3	(6.5)	255.1	149.6
Engro Holdings Limited	ENGROH	255.3	(6.4)	18.4	11.7	39.2	7.6	298.0	146.9
Fatima Fertilizer	FATIMA	140.9	(21.5)	(7.7)	12.2	78.7	(7.0)	187.5	74.1
Fauji Fertilizer Company	FFC	522.3	(8.0)	(6.5)	21.0	50.2	(10.2)	662.6	311.5
<b>Technology &amp; Comm</b>									
Systems Limited	SYS	117.8	(25.1)	(23.2)	(15.2)	11.9	(31.1)	171.3	96.0
<b>Oil &amp; Gas</b>									
Oil & Gas Development Co.	OGDC	275.8	(12.8)	2.0	6.0	34.7	(0.4)	328.9	168.1
Pak Oilfields	POL	636.7	2.4	7.7	6.0	29.0	9.1	659.8	435.5
Mari Petroleum Company	MARI	617.1	(11.9)	(11.4)	(1.0)	13.6	(12.8)	779.0	520.8
Pakistan Petroleum Ltd.	PPL	214.8	(17.1)	(0.3)	18.9	23.0	(8.0)	278.9	126.6
Pakistan State Oil	PSO	384.0	(18.8)	(17.4)	(5.8)	13.8	(19.0)	503.2	305.2
Attock Petroleum Ltd.	APL	533.1	(8.6)	0.6	7.9	24.1	1.1	614.1	364.0
<b>Power</b>									
Hub Power Co.	HUBC	207.3	(7.3)	(5.1)	21.8	75.0	(4.2)	238.6	108.8
<b>Textile</b>									
Nisat (Chunian) Ltd.	NCL	36.9	(25.5)	(15.8)	(25.8)	10.4	(19.7)	58.2	31.5
Nishat Mills	NML	149.1	(23.1)	(1.2)	(4.1)	54.1	(15.6)	205.1	95.8
<b>Banks</b>									
Bank AlHabib Limited	BAHL	156.0	-20.1	-14.9	-15.8	16.1	-16.4	213.1	125.5
Bank AlFalah	BAFL	117.2	-10.4	11.0	14.4	70.6	7.5	135.6	64.2
Habib Bank Limited	HBL	278.5	-18.3	-10.2	9.2	98.9	-13.9	363.8	125.6
MCB Bank Limited	MCB	369.6	-10.1	3.4	6.3	43.5	-2.6	447.1	250.2
Meezan Bank Limited	MEBL	444.9	-11.2	2.7	15.4	102.2	0.1	514.1	218.9
United Bank Ltd	UBL	401.5	-18.7	6.7	7.2	122.4	-5.4	503.1	177.3

Source: PSX & AKD Research

## Pakistan Economic Snapshot

Month-end Data	Units	Mar-25	Apr-25	May-25	Jun-25	Jul-25	Aug-25	Sept-25	Oct-25	Nov-25	Dec-25	Jan-26	Feb-26	Mar-26
<b>Monetary Rates</b>														
T-Bills - 3M	%	12.13	11.95	10.93	11.01	10.85	10.80	11.01	10.95	10.94	10.45	10.18	10.34	10.45
T-Bills - 6M	%	12.04	11.92	10.98	10.89	10.82	10.80	10.99	11.02	11.05	10.51	10.28	10.56	10.68
T-Bills - 12M	%	11.98	11.95	11.09	10.85	10.84	10.96	11.02	11.32	11.31	10.56	10.35	10.62	10.94
PIB 10Y	%	12.31	12.50	12.23	12.30	12.10	12.02	12.00	11.89	11.33	11.59	11.09	11.58	11.79
KIBOR 6M	%	12.13	12.10	11.20	11.13	11.02	11.03	11.09	11.02	11.04	10.65	10.49	10.61	10.66
Discount rate	%	13.00	13.00	12.00	12.00	12.00	12.00	12.00	12.00	12.00	11.50	11.50	11.50	11.50
Policy rate	%	12.00	12.00	11.00	11.00	11.00	11.00	11.00	11.00	11.00	10.50	10.50	10.50	10.50
<b>Inflation</b>														
National CPI Inflation	%	0.7	0.3	3.5	3.2	4.1	3.0	5.6	6.2	6.1	5.6	5.8	7.0	n.a
Core inflation (Urban)	%	8.2	7.4	7.3	6.9	7.0	6.9	7.0	7.5	6.6	6.9	7.2	7.1	n.a
Core inflation (Rural)	%	10.2	9.0	8.8	8.6	8.1	7.8	7.8	8.4	8.2	8.1	8.3	8.3	n.a
Food inflation (Urban)	%	-1.7	-1.9	5.3	4.2	2.2	-0.5	4.4	4.5	5	3.2	3.3	4.4	n.a
Food inflation (Rural)	%	-5.4	-4.6	2.1	2.4	1.5	-0.5	6.0	6.8	5.9	3.8	4.7	6.8	n.a
<b>External Indicators</b>														
Export (PBS)	US\$(mn)	2,645	2,174	2,671	2,477	2,685	2,416	2,499	2,848	2,420	2,268	3,055	2,272	n.a
Import (PBS)	US\$(mn)	4,828	5,596	5,237	5,353	5,830	5,288	5,848	6,087	5,306	6,081	5,805	5,253	n.a
Trade Deficit (PBS)	US\$(mn)	-2,183	-3,422	-2,566	-2,876	-3,145	-2,872	-3,349	-3,239	-2,886	-3,813	-2,750	-2,981	n.a
Export (SBP)	US\$(mn)	2,755	2,596	2,438	2,609	2,780	2,496	2,609	2,632	2,277	2,751	2,746	n.a	n.a
Import (SBP)	US\$(mn)	4,935	5,225	5,476	4,998	5,417	4,998	5,034	5,383	4,716	5,737	5,337	n.a	n.a
Trade Deficit (SBP)	US\$(mn)	-2,180	-2,629	-3,038	-2,389	-2,637	-2,502	-2,425	-2,751	-2,439	-2,986	-2,591	n.a	n.a
Home Remittances	US\$(mn)	4,054	3,177	3,686	3,406	3,215	3,138	3,184	3,420	3,188	3,592	3,465	n.a	n.a
Current Account	US\$(mn)	1,276	28	-111	260	-529	-324	116	-291	98	-244	121	n.a	n.a
<b>Banking Sector</b>														
Deposits	PkR(bn)	31,626	31,496	32,715	35,498	34,280	34,463	35,211	35,149	36,731	36,156	n.a	n.a	n.a
Advances	PkR(bn)	13,470	13,073	13,025	13,522	13,273	13,193	13,456	13,279	13,430	14,145	n.a	n.a	n.a
Investments	PkR(bn)	32,384	33,167	34,626	36,571	36,191	36,303	35,816	36,547	36,731	37,893	n.a	n.a	n.a
W. A. lending rate	%	12.96	13.32	12.98	12.10	12.62	12.58	12.3	12.52	13.06	12.69	12.41	n.a	n.a
W. A. deposit rate	%	6.04	5.95	5.82	5.44	5.34	5.41	5.30	5.32	5.33	5.46	5.13	n.a	n.a
Spread rate	%	6.93	7.38	7.17	6.65	7.28	7.17	6.96	7.20	7.73	7.23	7.28	n.a	n.a
<b>Currency</b>														
Fx Reserves	US\$(mn)	15,014	14,759	16,077	19,269	18,976	19,077	19,797	19,688	19,738	20,742	21,339	21,408	21,434
USDPkR - Interbank	PkR/USD	280.16	280.97	282.02	283.76	282.87	281.77	281.32	280.912	280.62	280.25	279.95	279.47	279.40

Source: SBP, PBS & AKD Research

## Analyst Certification

We, the **AKD Research Team**, hereby individually & jointly certify that the views expressed in this research report accurately reflect our personal views about the subject securities and issuers. We also certify that no part of our compensation was, is, or will be, directly or indirectly, related to the specific recommendations or views expressed in this research report. We further certify that we do not have any beneficial holding of the specific securities that we have recommendations on in this report.

## AKD Research Team

Analyst	Tel no.	E-mail	Designation
Muhammad Awais Ashraf, CFA	+92 111 253 111 (693)	awais.ashraf@akdsl.com	Director Equity Research
Muhammad Ali	+92 111 253 111 (637)	ali.muhammad@akdsl.com	Sr. Investment Analyst
Usama Rauf	+92 111 253 111 (634)	usama.rauf@akdsl.com	Investment Analyst
Usama Habib	+92 111 253 111 (602)	usama.habib@akdsl.com	Investment Analyst
Iqrash Azam	+92 111 253 111 (646)	iqrash.azam@akdsl.com	Investment Analyst
Muhammad Umer Siddiqui	+92 111 253 111 (685)	umer.siddiqui@akdsl.com	Investment Analyst
Muhammad Jasim Sarwar	+92 111 253 111 (604)	jasim.sarwar@akdsl.com	Investment Analyst
Kamal Ahmed	+92 111 253 111 (603)	kamal.ahmed@akdsl.com	Technical Analyst
Nasir Khan	+92 111 253 111 (639)	nasir.khan@akdsl.com	Research Production
Noman Mughal	+92 111 253 111 (614)	noman.mughal@akdsl.com	Research Production
Tariq Mehmood	+92 111 253 111 (643)	tariq.mehmood@akdsl.com	Library Operations

### Disclosure Section

Neither the information nor any opinion expressed herein constitutes an offer or a solicitation of an offer to transact in any securities or other financial instrument and is for the personal information of the recipient containing general information only. AKD Securities Limited (hereinafter referred to as AKDS) is not soliciting any action based upon it. This report is not intended to provide personal investment advice nor does it provide individually tailored investment advice. This report does not take into account the specific investment objectives, financial situation/financial circumstances and the particular needs of any specific person. Investors should seek financial advice regarding the appropriateness of investing in financial instruments and implementing investment strategies discussed or recommended in this report and should understand that statements regarding future prospects may not be realized. AKDS recommends that investors independently evaluate particular investments and strategies and it encourages investors to seek the advice of a financial advisor.

The appropriateness of a particular investment or strategy will depend on an investor's individual circumstances and objectives. The securities or strategies discussed in this report may not be suitable for all investors, and certain investors may not be eligible to purchase or participate in some or all of them.

Reports prepared by AKDS research personnel are based on public information. AKDS makes every effort to use reliable, comprehensive information, but we make no representation that it is accurate or complete. Facts and views presented in this report have not been reviewed by and may not reflect information known to professionals in other business areas of AKDS including investment banking personnel. AKDS has established information barriers between certain business groups maintaining complete independence of this research report.

This report has been prepared independently of any issuer of securities mentioned herein and not in connection with any proposed offering of securities or as agent of any issuer of any securities. Neither AKDS, nor any of its affiliates or their research analysts have any authority whatsoever to make any representation or warranty on behalf of the issuer(s). AKDS Research Policy prohibits research personnel from disclosing a recommendation, investment rating, or investment thesis for review by an issuer prior to the publication of a research report containing such rating, recommendation or investment thesis.

We have taken all reasonable care to ensure that the information contained herein is accurate, up to date, and complies with all prevailing Pakistani legislations. However, no liability can be accepted for any errors or omissions, or for any loss resulting from the use of the information provided as any data and research material provided ahead of an investment decision are for information purposes only. We shall not be liable for any errors in the provision of this information, or for any actions taken in reliance thereon. We reserve the right to amend, alter, or withdraw any of the information contained in these pages at any time and without notice. No liability is accepted for such changes.

### Stock Ratings

Investors should carefully read the definitions of all ratings used in each research report. In addition, research reports contain information carrying the analyst's view and investors should carefully read the entire research report and not infer its contents from the rating ascribed by the analyst. In any case, ratings or research should not be used or relied upon as investment advice. An investor's decision to buy, sell or hold a stock should depend on individual circumstances and other considerations. AKDS uses a three tier rating system: i) Buy, ii) Neutral and iii) Sell with total returns (capital upside + dividend yield) benchmarked against the expected one year forward floating (variable) risk free rate (10yr PIB) plus risk premium.

### Valuation Methodology

To arrive at our period end target prices, AKDS uses different valuation techniques including:

Discounted Cash Flow (DCF, DDM)

Relative Valuation (P/E, P/B, P/S etc.)

Equity & Asset return based methodologies (EVA, Residual Income etc.)

### Analyst Certification of Independence

The analysts hereby certify that their views about the companies and their securities discussed in this report are accurately expressed and that they have not received and will not receive direct or indirect compensation in exchange for expressing specific recommendations or views in this report.

The research analysts, strategists or research associates principally having received compensation responsible for the preparation of this AKDS research report based upon various factors including quality of research, investor client feedback, stock picking, competitive factors and firm revenues.

### Disclosure of Interest Area

AKDS and the authoring analyst do not have any interest in any companies recommended in this research report irrespective of the fact that AKD Securities Limited may have, within the last three years, served as manager or co-manager of a public offering of securities for, or currently may make a primary market in issues of, any or all of the entities mentioned in this report or may be providing, or have provided within the previous 12 months, significant advice or investment services in relation to the investment concerned or a related investment.

### Regional Disclosures (Outside Pakistan)

The information provided in this report and the report itself is not intended for distribution to, or use by, any person or entity in any jurisdiction or country where such distribution or use would be contrary to law or regulation or which would subject AKDS or its affiliates to any registration or licensing requirements within such jurisdiction or country.

Furthermore, all copyrights, patents, intellectual and other property in the information contained in this report are held by AKDS. No rights of any kind are licensed or assigned or shall otherwise pass to persons accessing this information. You may print copies of the report or information contained within herein for your own private non-commercial use only, provided that you do not change any copyright, trade mark or other proprietary notices. All other copying, reproducing, transmitting, distributing or displaying of material in this report (by any means and in whole or in part) is prohibited.

For the United States

### Compliance Notice.

This research report prepared by AKD Securities Limited is distributed in the United States to Major US Institutional Investors (as defined in Rule 15a-6 under the Securities Exchange Act of 1934, as amended) only by Decker & Co, LLC, a broker-dealer registered in the US (registered under Section 15 of Securities Exchange Act of 1934, as amended). All responsibility for the distribution of this report by Decker & Co, LLC in the US shall be borne by Decker & Co, LLC. All resulting transactions by a US person or entity should be effected through a registered broker-dealer in the US. This report is not directed at you if AKD Securities Limited or Decker & Co, LLC is prohibited or restricted by any legislation or regulation in any jurisdiction from making it available to you. You should satisfy yourself before reading it that Decker & Co, LLC and AKD Securities Limited are permitted to provide research material concerning investment to you under relevant applicable legislations and regulations.

### New Rating Definitions

BUY > 15% expected total return

NEUTRAL > 0% to < 15% expected total return

SELL < 0% expected total return



AKD Securities Limited  
602, Continental Trade Centre,  
Clifton Block 8, Karachi, Pakistan.  
research@akdsl.com